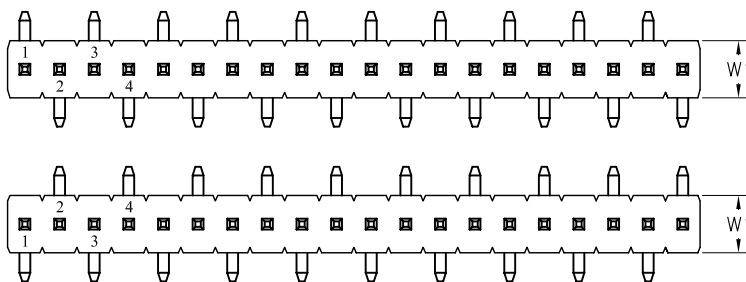


1.27mm (0.050") Board Spacer, Single Row, SMT Type H=1.00mm

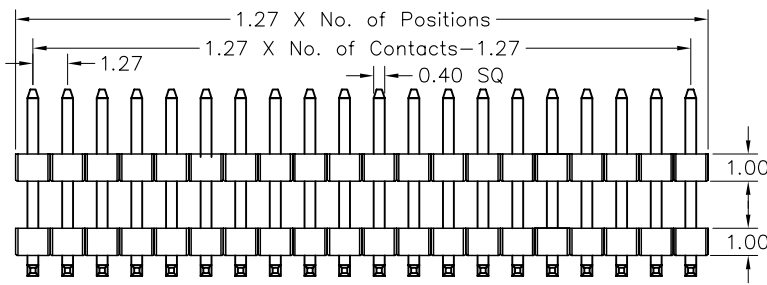
SPECIFICATIONS

Current Rating : 1AMP
 Contact Resistance : 20mΩ Max.
 Insulation Resistance: 1000MΩ Min.
 Withstanding Voltage : 500V AC/minute
 Operation Temperature: -40° C to +105° C
 Contact Material : Brass
 Contact plating : Gold Flash Plated
 Insulator Material : High Temperature Thermoplastic (UL94V-0)
 Standard: PA6T+30%G. F

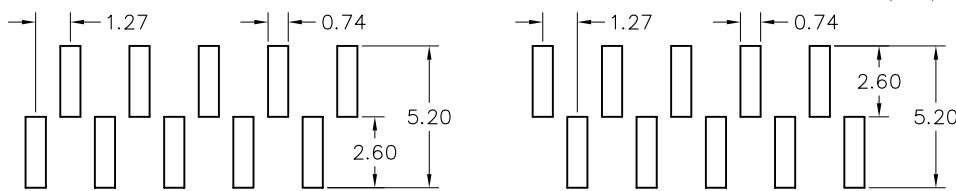
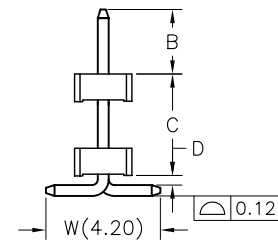


B TYPE

A TYPE



| H | 1.0 | 1.5 | 1.7 | 2.0 | 2.5 |
|---|---------|---------|---------|---------|---------|
| W | W1 W2 | W1 W2 | W1 W2 | W1 W2 | W1 W2 |
| | 2.0 3.4 | 2.0 3.0 | 2.5 3.0 | 2.5 3.0 | 2.5 3.0 |



A TYPE

B TYPE

Recommended PCB Layout

Pin Length = B+C+D+W/2

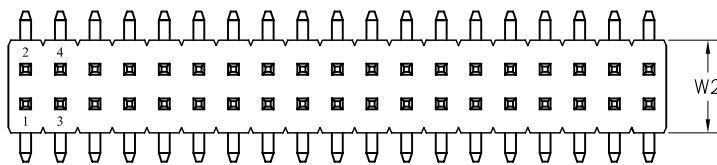
Ordering Information

| | | | | | | |
|-----------------|---------------------|---------------------------|---------------|---------------|-------------|---|
| PCM1102 | - XX | XX | A | XX | B 1 B | X |
| Plastics Height | No. of Pins Per Row | Contact Plating | Serial Number | Material Type | Options | |
| 10:1.0mm | 02~50 | 01:Gold Flash | | B:NYLON 6T | A:BAG | |
| 15:1.5mm | | 02:Gold 2μ'' | | C:LCP | B:TRAY | |
| 17:1.7mm | | 03:Gold 3μ'' | | D:NYLON 9T | C:TUBE | |
| 20:2.0mm | | 04: Tin | | | D:TAPE REEL | |
| 25:2.5mm | | Duplex Plating | | | | |
| | | 06:Gold Flash/Tin(100μ'') | | | | |

1. 27*1.27mm(0.050"*0.050") Board Spacer, Dual Row, SMT Type H=1.00mm

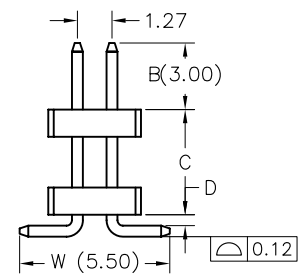
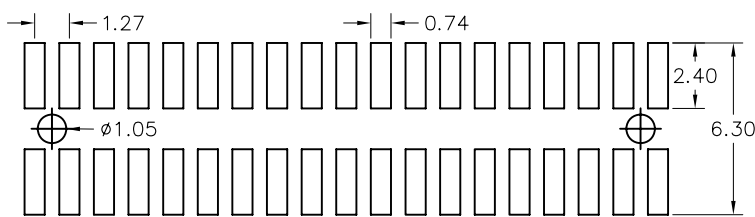
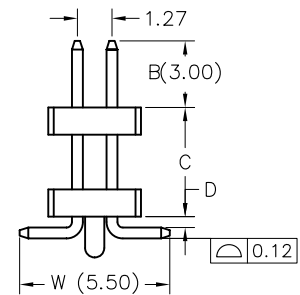
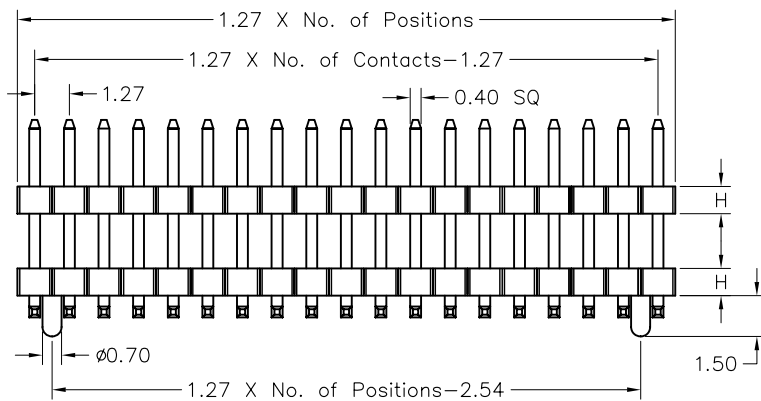
SPECIFICATIONS

Current Rating : 1AMP
 Contact Resistance : 20mΩ Max.
 Insulation Resistance: 1000MΩ Min.
 Withstanding Voltage : 500V AC/minute
 Operation Temperature: -40° C to +105° C
 Contact Material : Brass
 Contact plating : Gold Flash Plated
 Insulator Material : High Temperature Thermoplastic (UL94V-0)
 Standard: PA6T+30%G. F



| H | 1.0 | 1.5 | 1.7 | 2.0 | 2.5 |
|---|-----|-----|-----|-----|-----|
| W | W1 | W2 | W1 | W2 | W1 |
| | 2.0 | 3.4 | 2.0 | 3.0 | 2.5 |
| W | W1 | W2 | W1 | W2 | W1 |
| | 2.5 | 3.0 | 2.5 | 3.0 | 2.5 |

$$\text{Pin Length} = B+C+D+(W-1.27)/2$$



Recommended PCB Layout

Ordering Information

| | | | | | | | |
|-----------------|---|---------------------|---------------------------|---------------|---------------|-------------|---|
| PCM2102 | - | XX | XX | A | XX | B 1 B | X |
| Plastics Height | | No. of Pins Per Row | Contact Plating | Serial Number | Material Type | Options | |
| 10:1.0mm | | 02~50 | 01:Gold Flash | | B:NYLON 6T | A:BAG | |
| 15:1.5mm | | | 02:Gold 2μ'' | | C:LCP | B:TRAY | |
| 17:1.7mm | | | 03:Gold 3μ'' | | D:NYLON 9T | C:TUBE | |
| 20:2.0mm | | | 04: Tin | | | D:TAPE REEL | |
| 25:2.5mm | | | Duplex Plating | | | | |
| | | | 06:Gold Flash/Tin(100μ'') | | | | |